

The background of the image is a photograph of an art studio, overlaid with a semi-transparent blue filter. The studio contains several wooden easels, some with canvases, and a central table covered with various art supplies like paint cans and brushes. The walls are decorated with numerous framed and unframed artworks, including botanical illustrations and abstract pieces. Large windows on the left side of the room allow natural light to enter.

Creating in Place

Art Show

Insight Community of the Desert
Buddhist Meditation Center
Palm Springs



Welcome
Lorene Jabola
ICD board Member

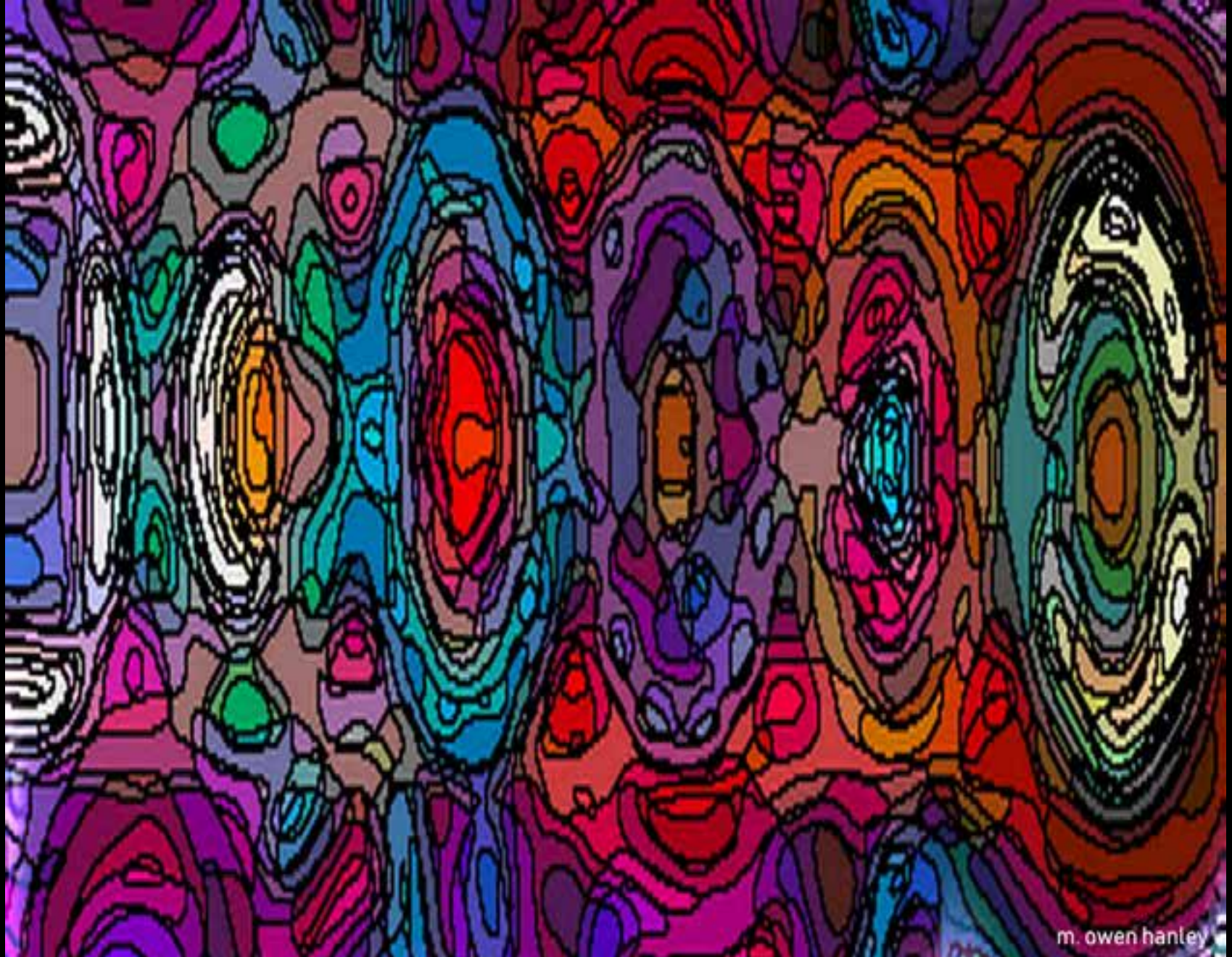
Michael Hanley



I prefer to dream in color

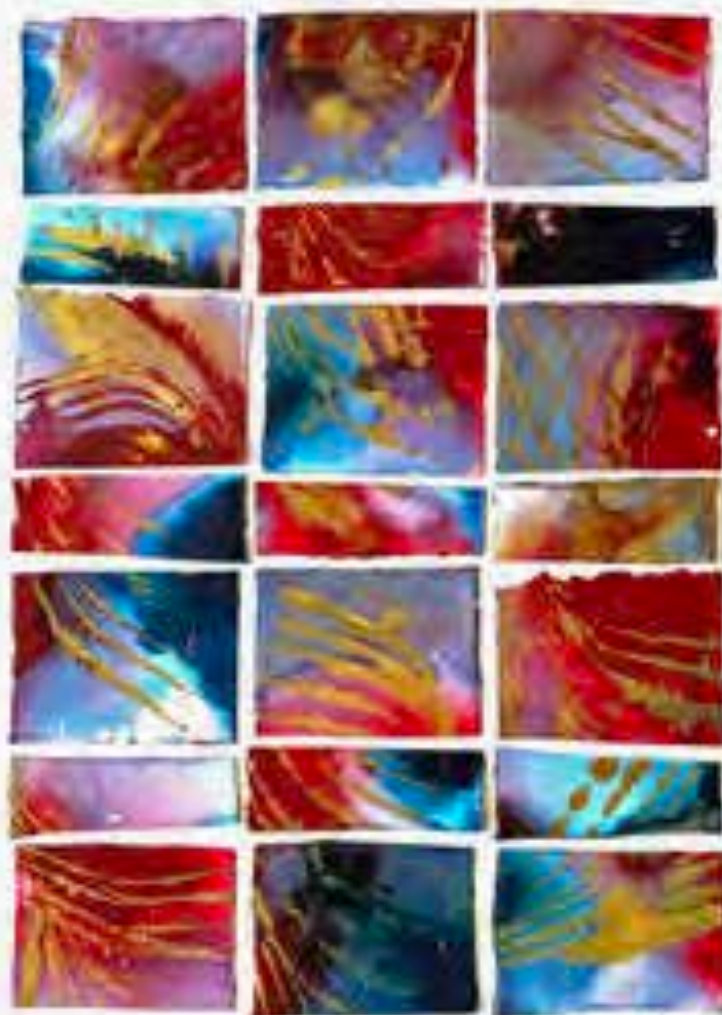


The Journey is Magical



Reverberation

Anita Harmon



2000-2001

2000-2001



Angela Law (1995-1997)

Angela Law



Green and yellow from the sea 1979

Green and yellow

Tony Jochimsen



LIFE



WE



COLORS

Tim Leary



Geometric Assemblage



Assemblage 5

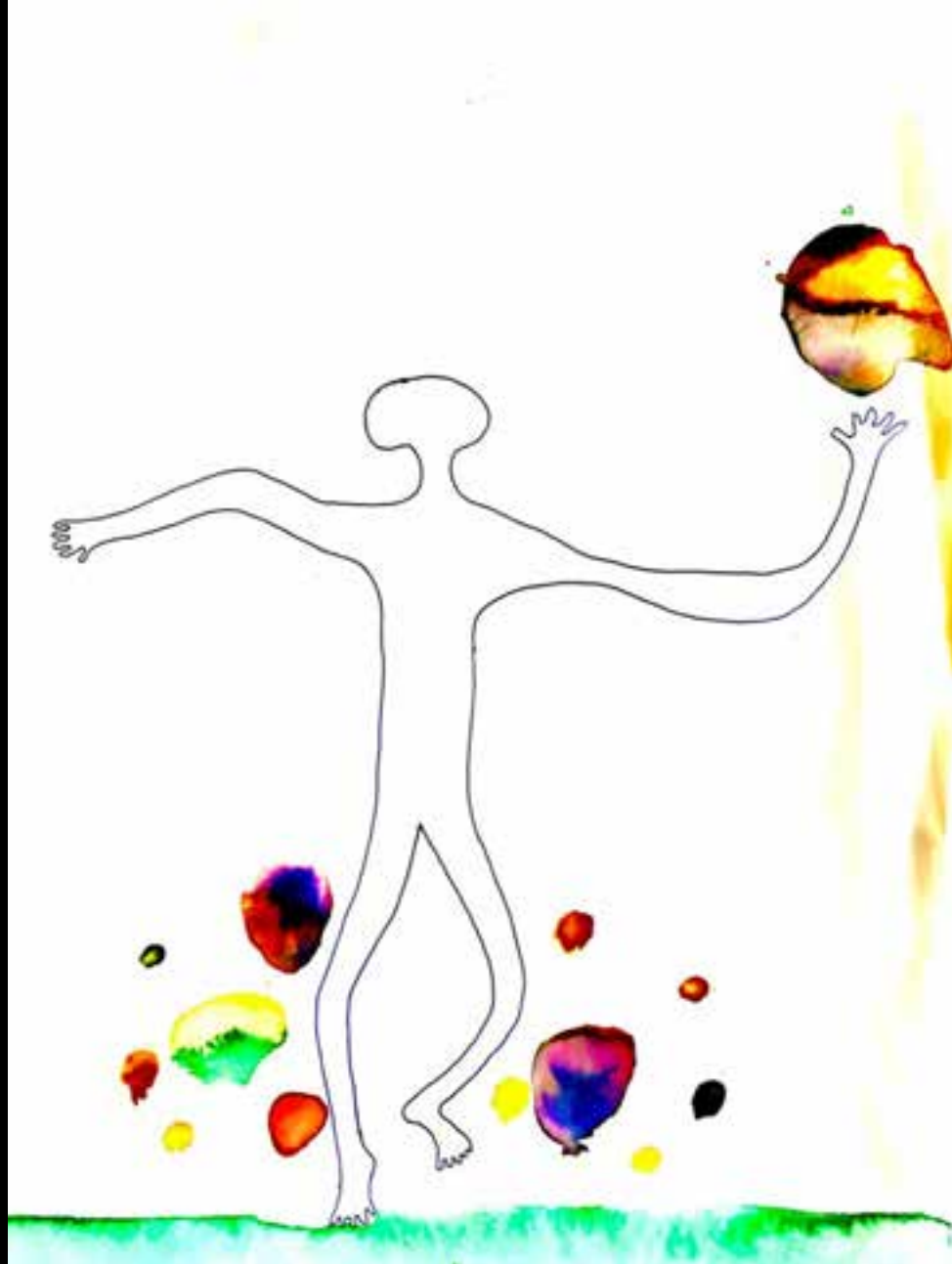


Collage in Blue and Green

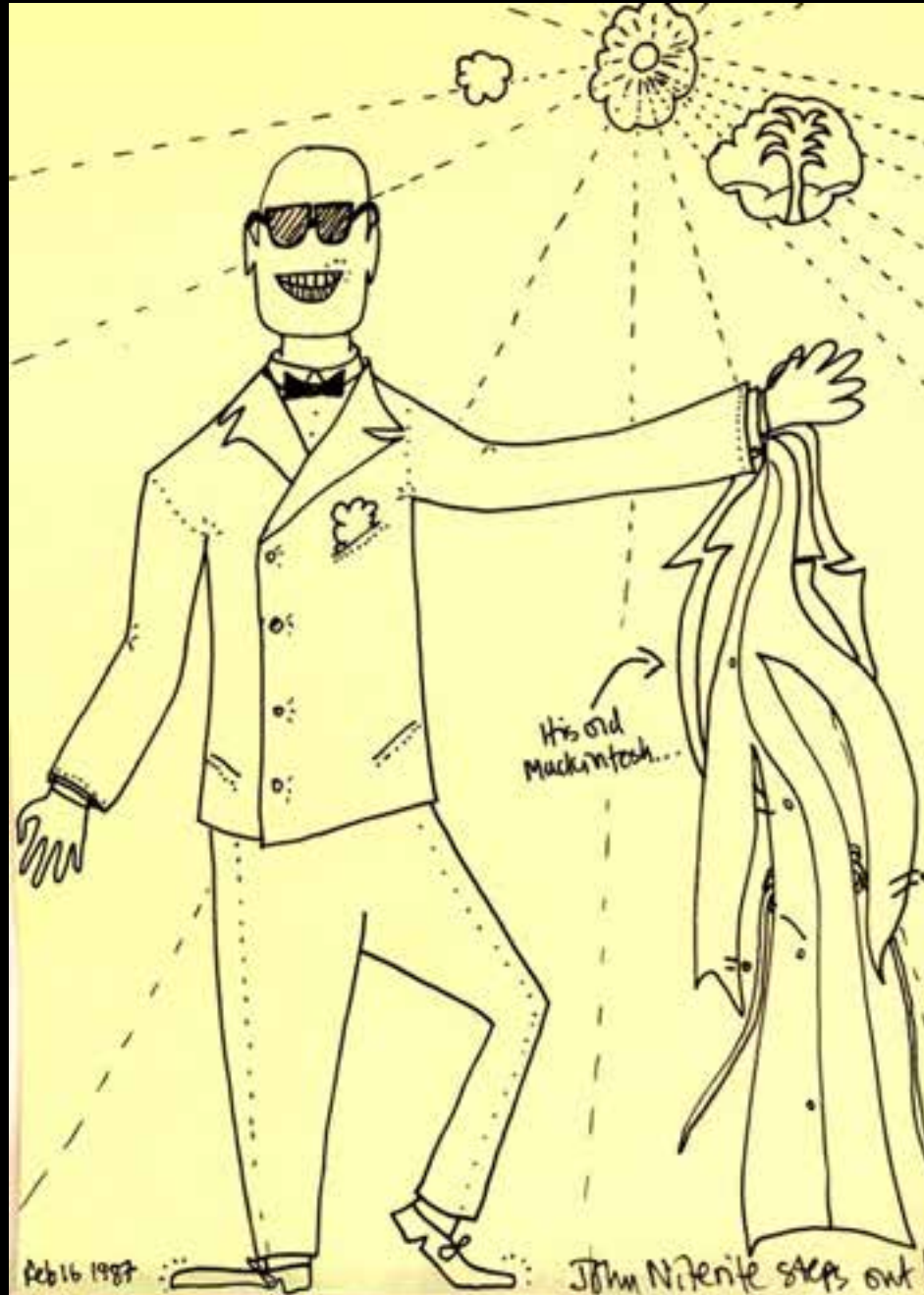
Rupert MacNee



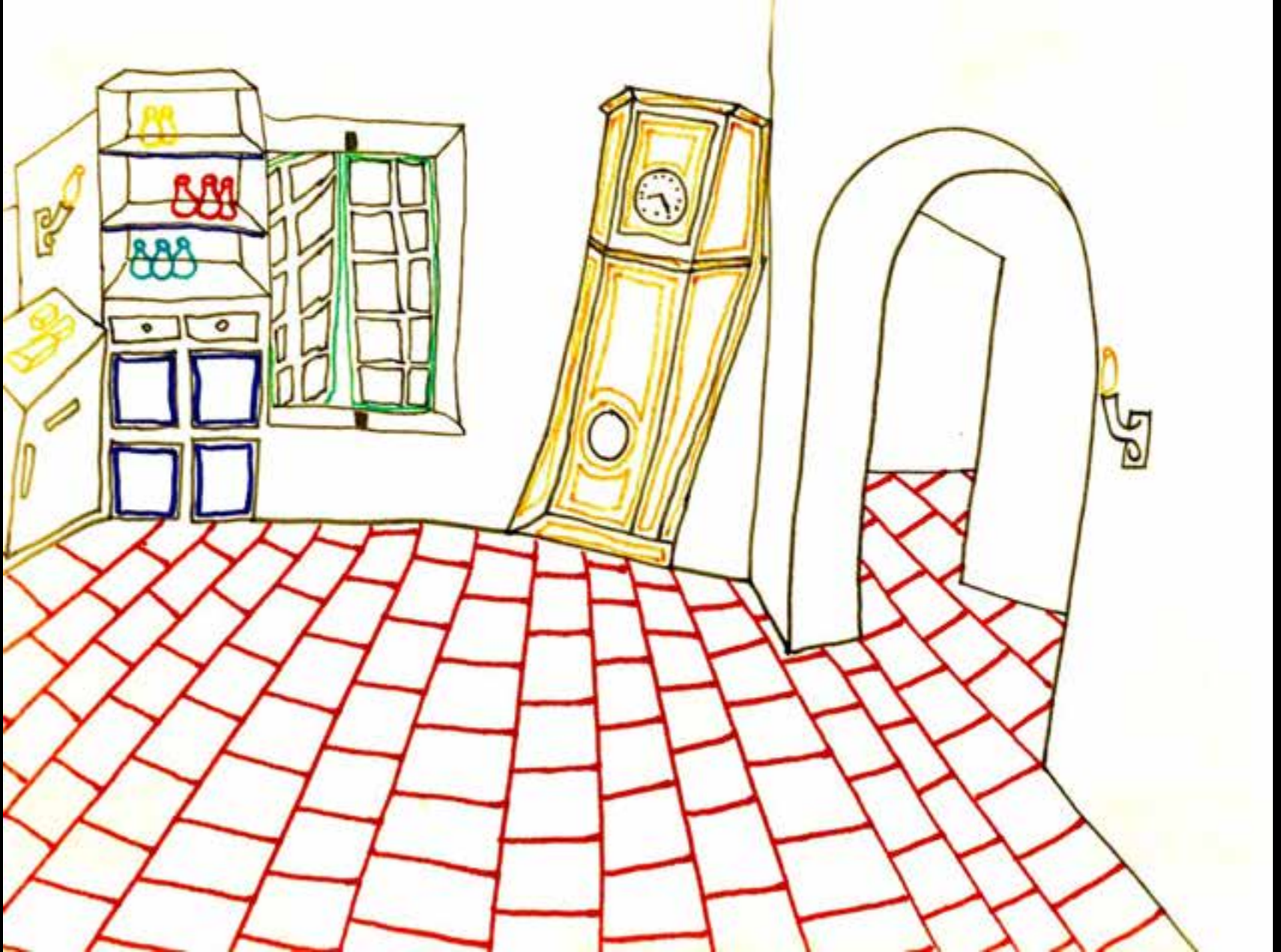
Hollywood 1980



Julian, California 1980



JK steps out



Sant Lluís, Menorca, Balears, Spain 1975



St. Mary's Bathurst Street, Toronto, Canada, 1978

Mary Lu McManus



Desert Scene



30 Days of Stitch Meditation



Covid-19



Desert Spirit

Lucia Grossberger Morales



Dancing on the Shore



Red, Blue and White



Waves kissing Sand

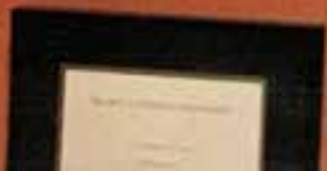


Blends no. 1



Blends no. 2

Richard M. Proctor





Memorial Day 2020: 8:46



Bandolier Bag No. 2



Untitled



COVID-19 No. 1

Dorene Quinn



Visitor



Sanguine



Gravity series



Gravity series

Jane Williams







Glenn Yamaguchi



Wabi Sabi Altar

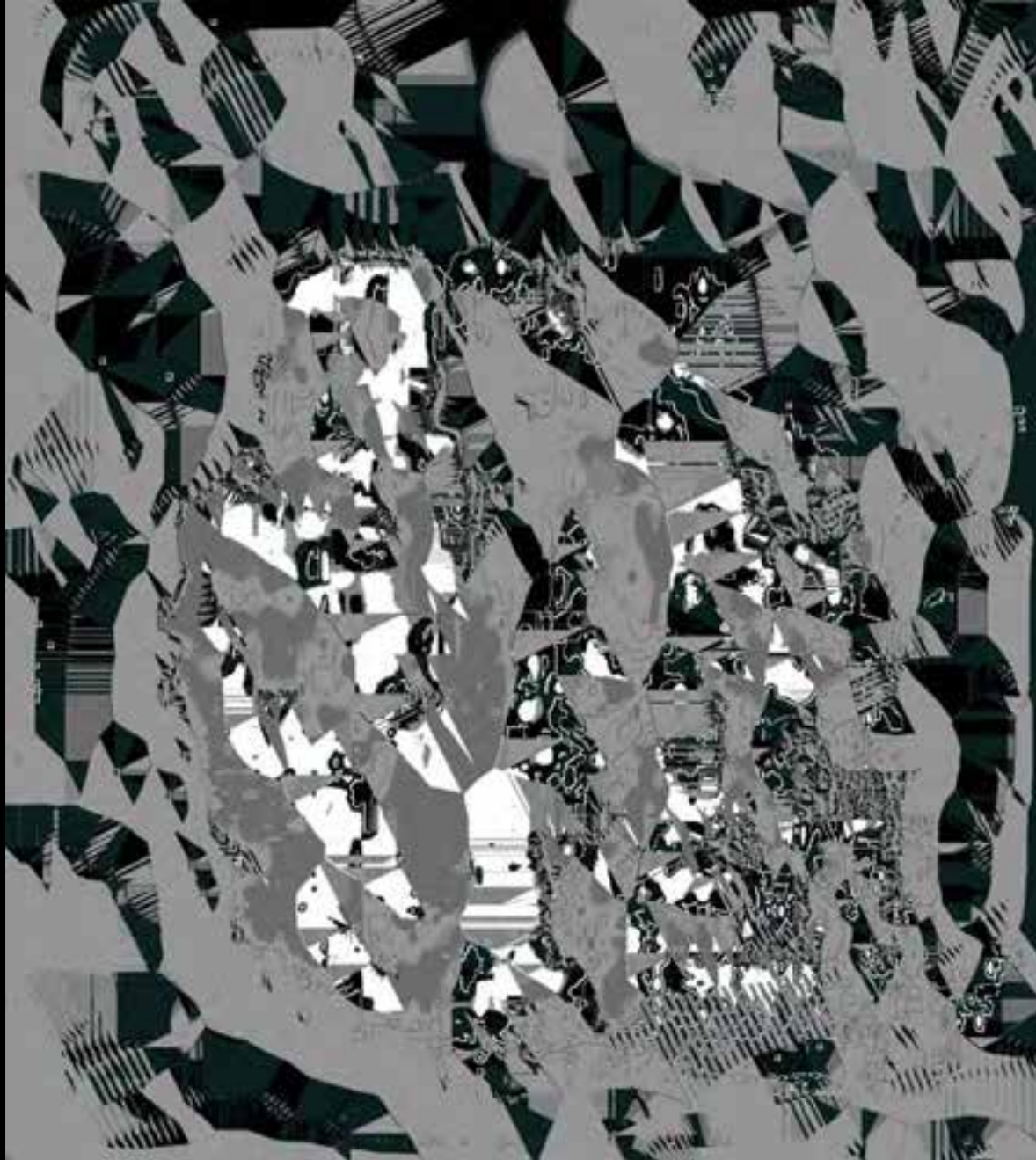


The Flow of Destiny

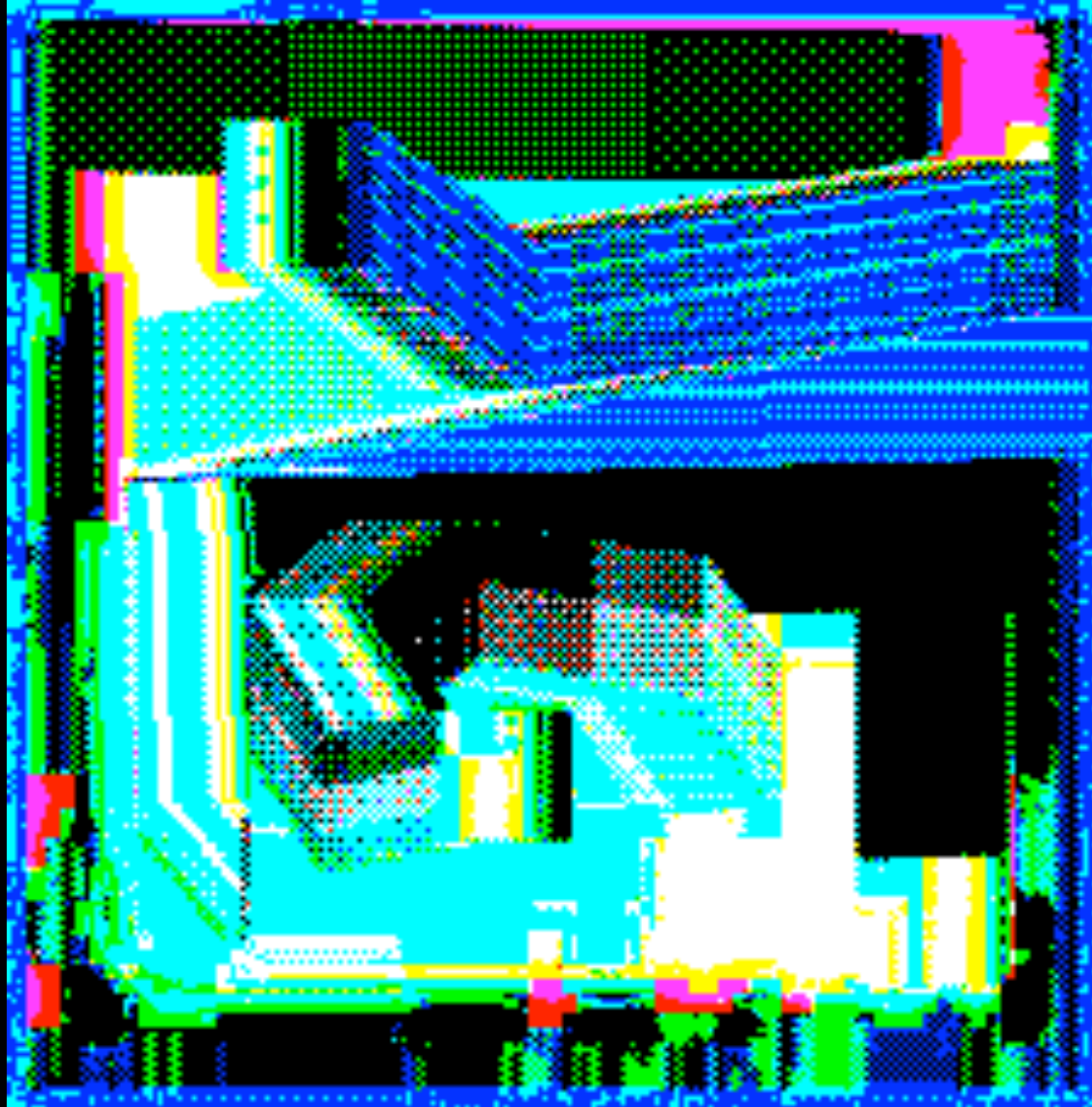
Yvonne Buchanan



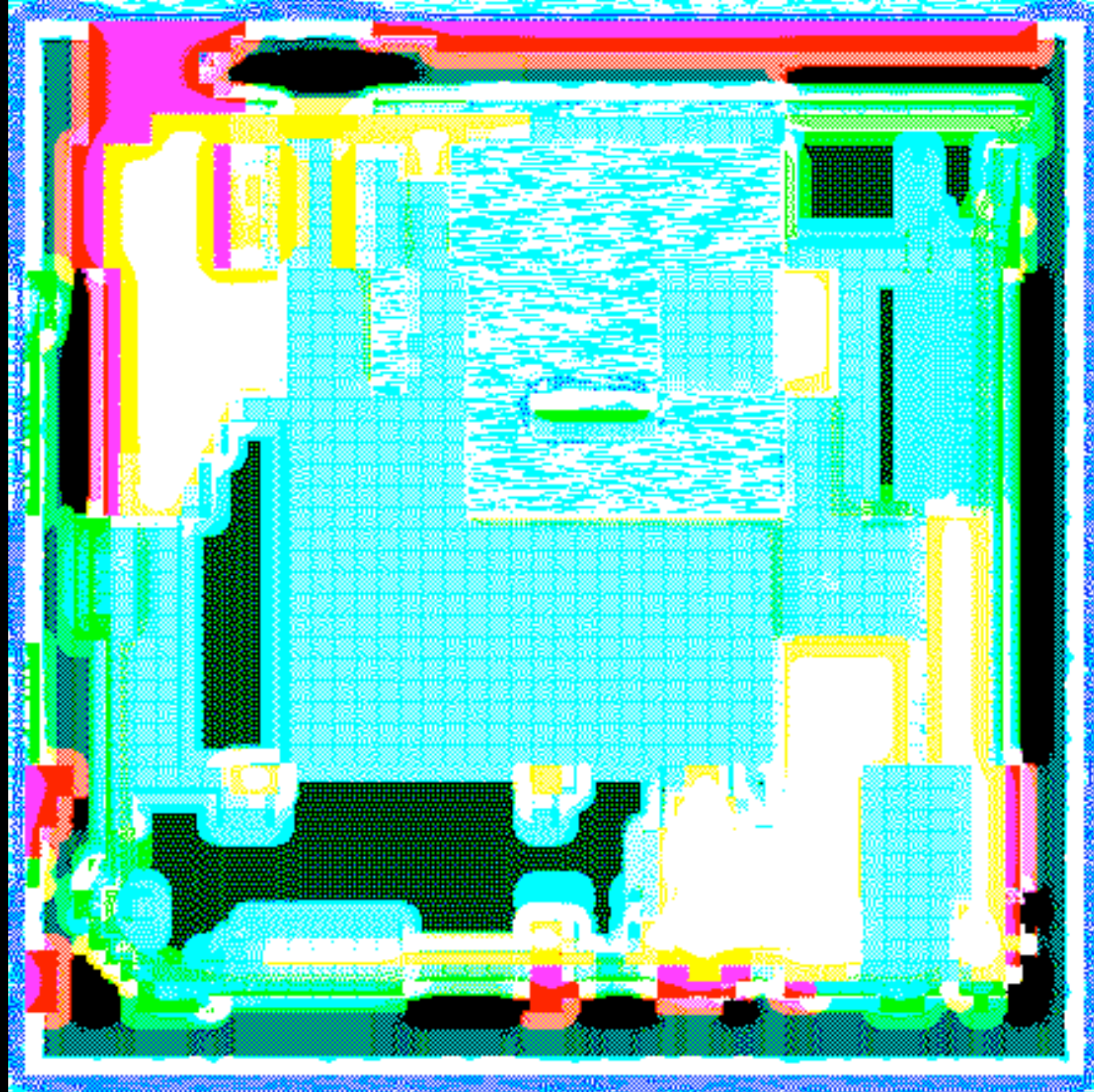
Gliitch series #18



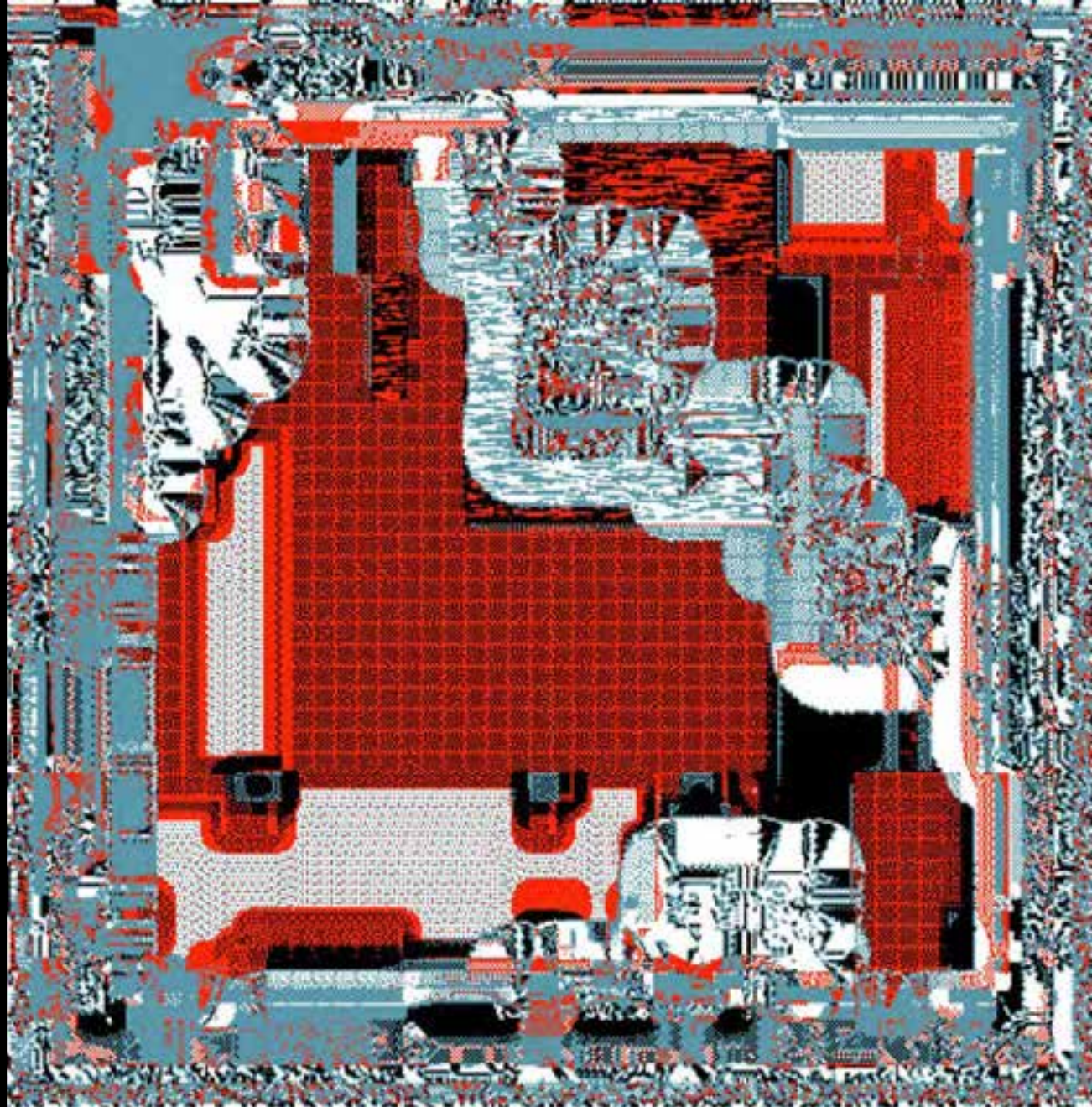
Gliitch series #20



Interior series #3



Interior series #8



Interior series #9

The background is a photograph of an art studio, overlaid with a semi-transparent blue filter. The studio contains several easels, some with canvases, and a central workbench with a black office chair. In the foreground, there is a large, clear glass jar filled with numerous pencils. The walls are decorated with various framed artworks. A large, red speech bubble with a white border is positioned in the center of the image, containing the text "Questions for Artists".

Questions for Artists

A blue-tinted photograph of an art studio. In the foreground, there's a table with a vase of pencils and some art supplies. In the middle ground, a wooden table is covered with various art materials, with a black office chair and a wooden chair nearby. The background features a wall covered with numerous framed and unframed artworks, and large windows on the left side.

Closing remarks

Lorene Jabola

Art Committee

Louise Lambert, chair

Yvonne Buchanan, Tim Leary, Dorene Quinn